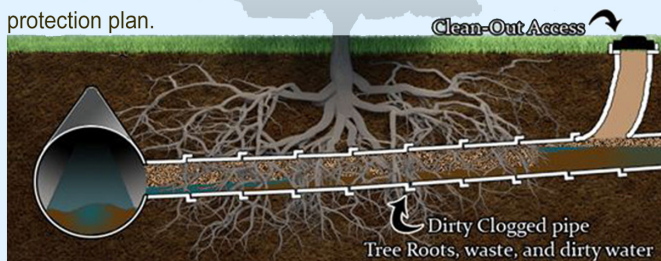


Sewer Cleaning & Televising



Sewer cleaning and inspections are essential to maintaining a properly functioning system and extending its life cycle. It is the first step in determining both the condition of infrastructure and if any repairs are needed. We recommend televising roughly 20% of your sewer system each year as part of a regular maintenance and protection plan.



Full Length Relining

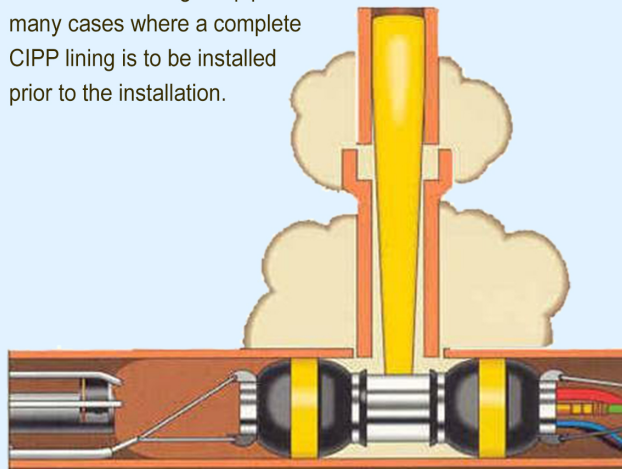
In some cases, an entire section of pipe will require replacement. Cured in place pipe (CIPP) is a trenchless rehabilitation process used to repair existing pipes using a resin based saturated felt tube. The tube is inserted into the existing pipe, expanded to contour the inside diameter and cured in place using steam or hot water creating a new pipe inside the existing pipe without the need for excavation.

This method is also applicable to spot repairs where only a small portion of pipe needs to be repaired.



Grouting Services

Most ground water infiltration enters structurally sound sewer systems through joints, manholes, service connections, and the initial first few feet of the service laterals. Chemical grouting has been utilized for over 65 years and has achieved a reputation as the best, most cost effective long term defense against leaking failure points that allow for such infiltration. Chemical grouting both polyurethane and acrylic, does not just stop sewer leaks by filling joints and cracks, rather grouting chemicals are forced into the surrounding soil where they gel with the soil into a waterproof barrier surrounding the pipe failure as well. It is even used in many cases where a complete CIPP lining is to be installed prior to the installation.

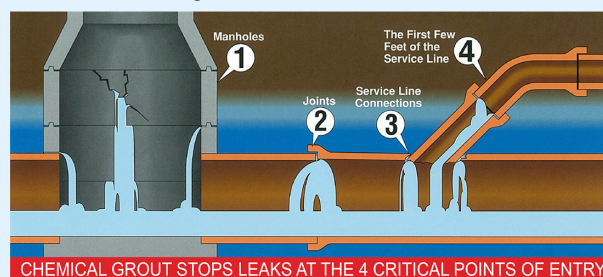


Storm & Sanitary Sewer Main Grouting

Prior to repair, a video inspection is performed to identify the location of the failure. Leaking joints and circular cracks are then repaired utilizing a pneumatic packing device that serves to both isolate the point of failure and allow for injection into the desired location.

Lateral Grouting

Service laterals are often a source of significant infiltration, however without employment of chemical grouting, seldom are repairs cost effective and simply avoided. With chemical grouting lateral repairs can be achieved utilizing the same basic concept and those for sealing a main line.



Manhole Rehabilitation



Across the Nation our manholes have become increasingly in need of repair. Cities and Towns across the United States are rehabilitating dozens or even hundreds of manholes each year.

Cementitious Relining

The most common type of repair for these structures, where concrete deterioration has occurred, is application of a cementitious liner. The liner incorporates a calcium aluminate additive combined with fiberglass resulting in a smooth corrosion resistant coating with enhanced structural stability. The liner can be applied either manually or through use of specialized spray equipment.

Epoxy Relining

Using epoxy is becoming widely used in the industry for its exceptionally high physical strengths and resistance to hydrogen sulfide gases, a common cause for failure. More and more engineers are now requiring manholes to receive an epoxy coating on new installations whether or not corrosive environments are anticipated. Typically, the epoxy is applied utilizing spray nozzle technology that can be designed and modified to fit specific application requirements.

Contact Information

O: +1 302 286 0701
F: +1 302 286 0704
mattz@standardpipeservices.com

PO Box 99
Bear, DE 19701